

On top of the world

THE FINAL OUTCOME of the 25th Chess Olympiad in Lucerne, Switzerland, makes one wonder whether the rest of the world will ever really catch the Soviet Union. From the outset the USSR stayed consistently at the top, beating most of their major rivals by 2½ points to 1½, or more. Near the end of the 14-round competition, having run out of leading teams to play, they pulled quickly away and romped home with 6½ points to spare.

Admittedly their team, led by world champion Anatoly Karpov and young superstar Gari Kasparov, were an awe-inspiring squad. But it had been hoped that, with matches over four boards, two or three countries might give them a run. On paper the Americans looked good, ranging from Walter Browne on board one to Larry Christiansen at second reserve, but they could only manage bronze medals. The Hungarians collapsed from the start, and only a late comeback pulled them into relative respectability. England, fourth seeds, fluctuated enormously — from a miserable half point against the USSR to a clean sweep of the Dutch next day.

Here are the leading scores of the 1982 Olympiad: 1, USSR 42½ points; 2, Czechoslovakia 36; 3, USA 35½; 4, Yugoslavia 35; 5-6 Hungary and Bulgaria 33½; 7, Poland 33; 8-9, Cuba and Denmark 32½; 10-14, England, Rumania, Israel, Argentina and Austria 32. The Czechs, originally seeded seventh, can be well pleased — the last time they collected silver was back in Folkestone, 1933. Other surprises occurred in individual matches, such as Australia's 3½-½ victory over Argentina.

Running concurrently with the Olympiad in Lucerne was the Fide (World Chess Federation) Congress, and it was here that the biggest sensation of all occurred. Icelandic Grandmaster Fridrik Olafsson was ousted from the Fide presidency by Florencio Campomanes, the colourful Filipino organiser. Campomanes clearly benefitted in the voting from the recent influx of Third World countries into Fide and, with his slogan "a time for change", won by a sizable margin. He's had some change already; the entire Fide secretariat in Amsterdam immediately resigned.

As part of his election campaign, Campomanes promised to take greater notice of the opinions of the world's top 150 players, and to increase Third World activity. He has certainly helped underdeveloped chess nations in the past. For example, he was a major influence in the initial Chinese emergence into international chess back in the mid-70s. Subsequently the Chinese have become regular team competitors, and continue to surprise. Here is the top-board game from their match against Rumania in Lucerne, in which Liu Wenzhe scored an upset victory over

top Rumanian Grandmaster Florin Gheorghiu. The Chinese also won the match: 3-1.

BENONI DEFENCE

F. GHEORGHIU	W. LIU
1. d4	Nf6
2. c4	c5
3. d5	e6
4. Nc3	e×d5
5. c×d5	d6
6. Nf3	g6
7. Nd2	Nbd7
8. e4	Bg7
9. Be2	0-0
10. 0-0	Re8
11. a4	Ne5
12. Re1	a6
13. f4!	

A risky advance, but strong if Black does not react energetically.

13. ...	Neg4
14. Bf3	h5
15. Nc4	N×e4!

A bold and ambitious knight sacrifice. Now if 16.N×e4 Black would win with 16...Bd4 ch 17. Kh1 R×e4.

16. R×e4	Bd4 ch
17. R×d4	

The experienced Gheorghiu returns some of his extra material to blunt the attack. 17.Kf1 N×h2 ch 18.Ke2 is possible, but Black would have two pawns and good play for his piece.

17. ...	c×d4
18. Ne4	Qh4
19. Nc×d6	

On 19.h3 comes 19...f5.

19. ...	Q×h2 ch
20. Kf1	Bf5
21. N×f5	g×f5?

Gheorghiu said afterwards he thought 21...R×e4! was very strong here, and gave 22.Nh6 ch N×h6 23.B×e4 Re8 24.Bf3 Ng4! etc.

22. Nf2!

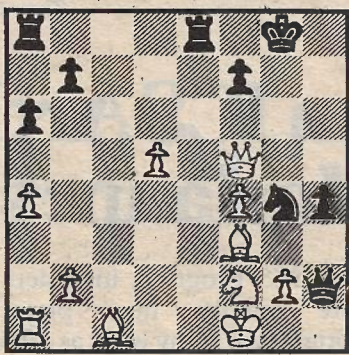
Now White has a winning advantage, two pieces for a rook up. But the Chinese players are noted for their resourcefulness, and Liu lays one last — but venomous — trap.

22. ...	d3
23. Q×d3	h4

Here the simple developing move 24.Bd2 would cancel out Black's remaining swindling chances.

24.Q×f5??

Florin played this move with a flourish and a thump. Clearly he had no inkling of the calamity about to befall him.



24. ... Qg1 ch!!

Ugh. White gets checkmated after 25.K×g1 Rel.

25. Resigns

MURRAY CHANDLER